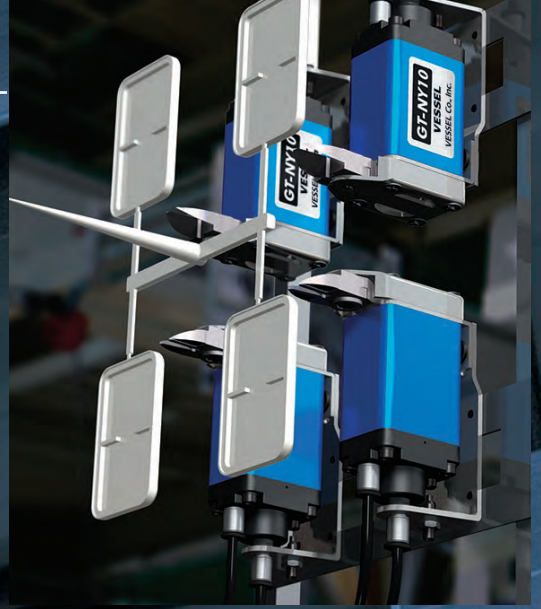


No. GT-NY25

# Sliding Air Nippers



These are high-class air nippers that can be mounted on gate cutting equipment and standby jigs for accurate, speedy cutting of resin products. VESSEL has a wide selection of items to meet a variety of needs not only for around-the-clock operations but also for the highly precise cutting accuracy.



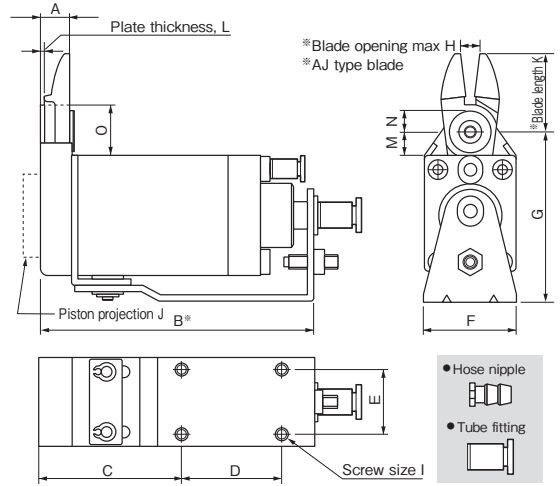
**No. GT-NY25**

## Sliding Air Nippers Horizontal-Type

The horizontal slide enables space to be utilized effectively. The low profile of the nipper body allows objects to be removed from the machine without obstructing the operations of the chuck plate.

## No. GT-NY05/10/15/25 Sliding Air Nippers Horizontal-Type

- The horizontal slide enables space to be utilized effectively.
- The low profile of the nipper body allows objects to be removed from the machine without obstructing the operations of the chuck plate.



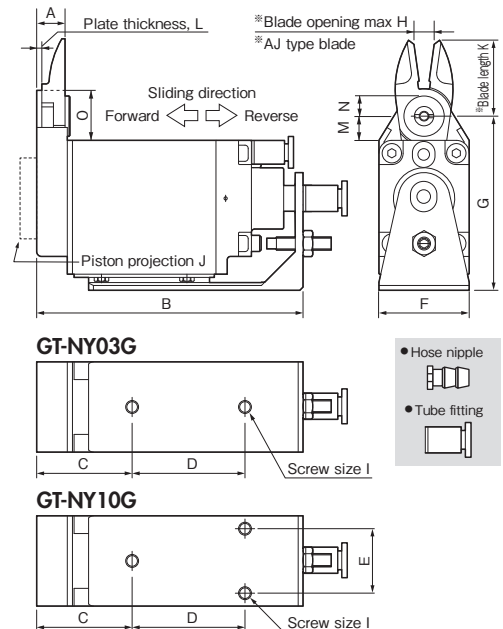
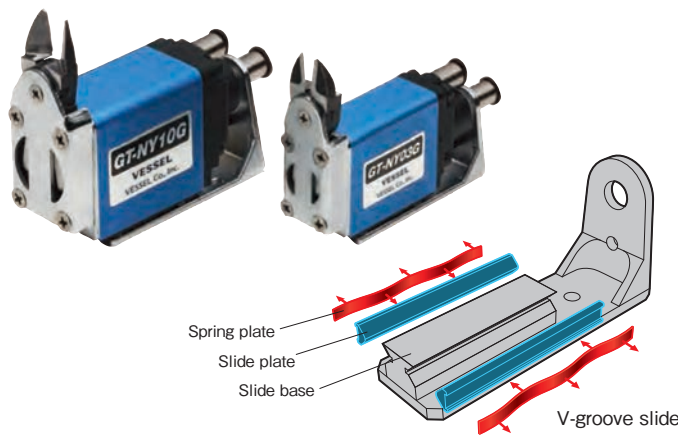
### Reference

Capacity $\phi$ (mm)			Model No.	Size (mm)															Air Consumption (cfl /str.)	Weight (g)	Slide Distance (mm)	Hose Port	EDP No.	
Soft Plastic	Hard Plastic	Copper Steel		A	B	C	D	E	F	G	H	I	J	K	L	M	N	O						
3.0	2.0	1.6	1.0	GT-NY05														48	155	Pull 0~3	W/hose nipple	360646		
3.0	2.0	1.6	1.0	GT-NY05R														48	155	Push 0~3	Hose I.D. $\phi$ 2.5 mm	360647		
3.0	2.0	1.6	1.0	GT-NY05-4	8.6	75.9	40.9	25	15	23	47.6	4	M4	3	22	1.6	8.5	6.25	16.5	48	155	Pull 0~3	W/tube fitting	360648
3.0	2.0	1.6	1.0	GT-NY05R-4														48	155	Push 0~3	Hose I.D. $\phi$ 2.5xO.D. $\phi$ 4 mm	360649		
3.5	2.3			GT-NY10														68	210	Pull 0~3	W/hose nipple	360652		
3.5	2.3			GT-NY10R														68	210	Push 0~3	Hose I.D. $\phi$ 2.5 mm	360656		
3.5	2.3			GT-NY10-4	8.8	82.1	42.1	30	20	28	51.6	6	M4	5	24	1.6	7.5	6.25	15.5	68	210	Pull 0~3	W/tube fitting	360660
3.5	2.3			GT-NY10R-4														68	210	Push 0~3	Hose I.D. $\phi$ 2.5xO.D. $\phi$ 4 mm	360664		
4.0	2.6			GT-NY15														136	319	Pull 0~3	W/hose nipple	360672		
4.0	2.6			GT-NY15R														136	319	Push 0~3	Hose I.D. $\phi$ 2.5 mm	360673		
4.0	2.6			GT-NY15-4	10.2	93	48	35	25	33	58	8	M4	5	27	2	7.5	6.25	16.5	136	319	Pull 0~3	W/tube fitting	360674
4.0	2.6			GT-NY15R-4														136	319	Push 0~3	Hose I.D. $\phi$ 2.5xO.D. $\phi$ 4 mm	360675		
5.0	3.4			GT-NY25														184	580	Pull 0~5	W/hose nipple	360680		
5.0	3.4			GT-NY25R														184	580	Push 0~5	Hose I.D. $\phi$ 4 mm	360681		
5.0	3.4			GT-NY25-6	12.5	108.5	54.5	40	30	42	69	9	M5	2	31	2.5	10.5	7	20.5	184	580	Pull 0~5	W/tube fitting	360682
5.0	3.4			GT-NY25R-6														184	580	Push 0~5	Hose I.D. $\phi$ 4xO.D. $\phi$ 6 mm	360683		

※Capacity indication shows the reference value when a standard blade is mounted. Values vary depending on the blade shapes and type of cut objects.  
 ※K (blade projection) and H (maximum blade opening) indicate the dimensions when a standard blade (AJ type) is mounted. ※Air Pressure: 0.4~0.5MPa (NY25 type: 0.5~0.6)  
 ※B refers to the distance from the cut position for PUSH style models, and the distance from the start position for PULL style models.

## No. GT-NY03G/10G Sliding Air Nippers Horizontal-Type

- V-groove slide base ensures constant, stable positioning.
- The unit is not subject to inclined loads, and has achieved high precision gate cutting performance.



### Reference

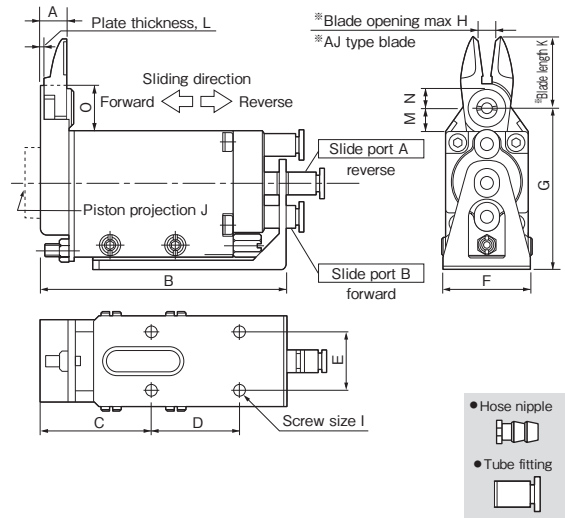
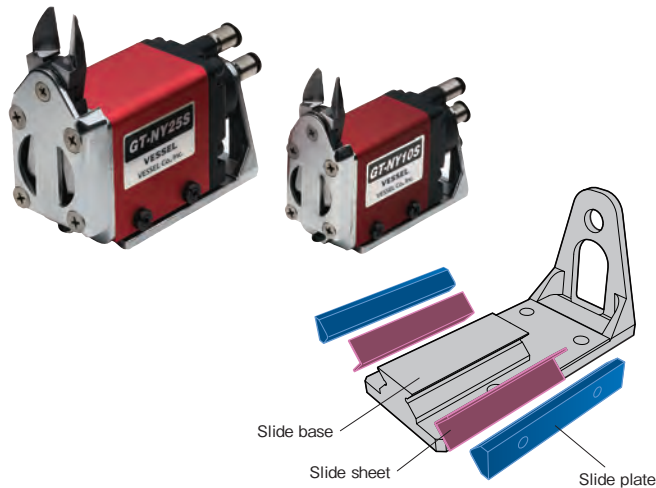
Capacity $\phi$ (mm)			Model No.	Size (mm)															Air Consumption (cfl /str.)	Weight (g)	Slide Distance (mm)	Hose Port	EDP No.	
Soft Plastic	Hard Plastic			A	B	C	D	E	F	G	H	I	J	K	L	M	N	O						
2.0	1.3			GT-NY03G														37	160	Pull 0~3	W/hose nipple	360741		
2.0	1.3			GT-NY03GR														37	160	Push 0~3	Hose I.D. $\phi$ 2.5 mm	360742		
2.0	1.3			GT-NY03G-4	8.6	74.5	29.5	30	-	19	46.5	3	M4	0	21	1.6	7.5	5.25	14.5	37	160	Pull 0~3	W/tube fitting	360743
2.0	1.3			GT-NY03GR-4														37	160	Push 0~3	Hose I.D. $\phi$ 2.5xO.D. $\phi$ 4 mm	360744		
3.5	2.3			GT-NY10G														68	275	Pull 0~3	W/hose nipple	360753		
3.5	2.3			GT-NY10GR														68	275	Push 0~3	Hose I.D. $\phi$ 2.5 mm	360754		
3.5	2.3			GT-NY10G-4	8.8	82.6	29.6	35	20	28	54	6	M4	5	24	1.6	7.5	6.25	15.5	68	275	Pull 0~3	W/tube fitting	360755
3.5	2.3			GT-NY10GR-4														68	275	Push 0~3	Hose I.D. $\phi$ 2.5xO.D. $\phi$ 4 mm	360756		

※Capacity indication shows the reference value when a standard blade is mounted. Values vary depending on the blade shapes and type of cut objects. ※K (blade projection) and H (maximum blade opening) indicate the dimensions when a standard blade (AJ type) is mounted. ※Air Pressure: 0.4~0.5MPa

※Blades are optional. Note that a forward or a backward-facing blades are respectively available.

## No. GT-NY10S/25S Double Action Sliding Air Nippers

- The springless slide construction of the main unit ensures smooth movement.
- V-groove slide base has been employed for high precision positioning.



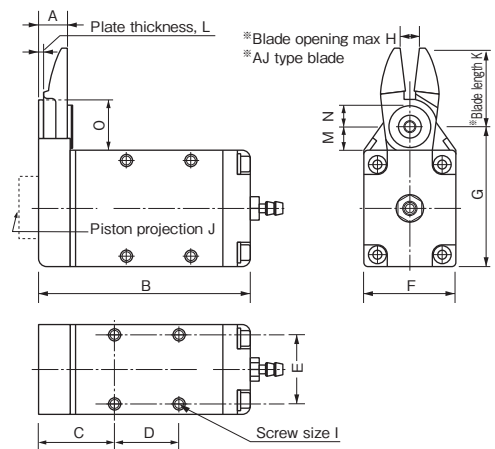
### Reference

Capacity $\phi$ (mm) Soft Plastic Hard Plastic	Model No.	Size (mm)															Air Consumption (cni /str.)	Weight (g)	Slide Distance (mm)	Hose Port	EDP No.
		A	B	C	D	E	F	G	H	I	J	K	L	M	N	O					
3.5 2.3	GT-NY10S	8.8	84.5	38	30	20	32	55	6	M4	5	24	1.6	7.5	6.25	15.5	68	300	0~3.5	W/tube fitting Hose I.D. $\phi 2.5 \times \text{O.D. } \phi 4$ mm	360731
5.0 3.4	GT-NY25S	12.5	106.5	47	40	30	47	72	9	M5	2	31	2.5	10.5	7	20.5	184	695	0~5.0	W/tube fitting Hose I.D. $\phi 4 \times \text{O.D. } \phi 6$ mm	360732

※Capacity indication shows the reference value when a standard blade is mounted. Values vary depending on the blade shapes and type of cut objects.  
 ※K (blade projection) and H (maximum blade opening) indicate the dimensions when a standard blade (AJ type) is mounted.  
 ※Air Pressure...NY10S: 0.4~0.5MPa / NY25S: 0.5~0.6MPa

## No. GT-NF05/10/15 Type-F Air Nippers

- These compact, lightweight nippers have been designed for easy mounting inside equipment and to enable secure mounting under high-density mounting conditions.



### Reference

Capacity $\phi$ (mm) Soft Plastic Hard Plastic Copper Steel	Model No.	Size (mm)															Air Consumption (cni /str.)	Weight (g)	Hose Port	EDP No.
		A	B	C	D	E	F	G	H	I	J	K	L	M	N	O				
3.0 2.0 1.6 1.0	GT-NF05	8.6	59.9	21.9	17	18	23	39.5	4	M3	3	22	1.6	8.4	6.25	16.4	43	101	W/hose nipple	360606
3.5 2.3 1.7 1.1	GT-NF10	8.8	65.1	23.1	20	22	28	43.5	6	M3.5	5	24	1.6	7.4	6.25	15.4	63	143	Hose I.D.	360607
4.0 2.6 1.8 1.2	GT-NF15	10.2	73	25	25	26	33	48.5	8	M4	5	27	2	7.4	6.25	16.4	128	219	$\phi 2.5 \times \phi 4$ mm	360608

※Capacity indication shows the reference value when a standard blade is mounted. Values vary depending on the blade shapes and type of cut objects.  
 ※K (blade projection) and H (maximum blade opening) indicate the dimensions when a standard blade (AJ type) is mounted. Mounting screw for NF10 (M3.5) is regarded as spare part.  
 ※Air Pressure...0.4~0.5MPa

### List of Blade Springs

EDP No.	Size (mm)		Material	Applicable Models
	Wire Dia. x O/D x Free Length + Pitch (or No. of Turns)			
859116	$\phi 0.4 \times \phi 3.6 \times 10$	No. of Turns 7.5T	SUS	NY03G
859111	$\phi 0.5 \times \phi 3.8 \times 11$	P=1.5	SWP	NY05
859115	$\phi 0.4 \times \phi 3.6 \times 16.5$	No. of Turns 11.5T	SUS	NY10, NY15
859114	$\phi 0.6 \times \phi 5.2 \times 17$	No. of Turns 10.5T	SUS	NY25
859110	$\phi 0.5 \times \phi 3.8 \times 14$	P=1.5	SWP	NT03, NT05
859112	$\phi 0.8 \times \phi 5.2 \times 17$	P=2.0	SWP	NT10
859113	$\phi 0.8 \times \phi 5.5 \times 23$	P=2.0	SWP	NT20

※Blades are optional. Note that a forward or a backward-facing blades are respectively available.